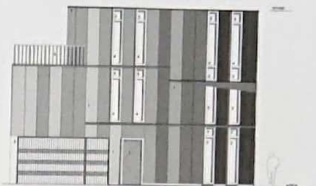


TWISTED CORNER PRIVATE HOUSE IN NIEUW LEYDEN

1. Cladding: Eternit Natura panels
2. Hi+ glass
3. Colorbet, emalised glass
4. Safety glass
5. Aluminium
6. Metal fence
7. Aluminium parapet
8. Garage door

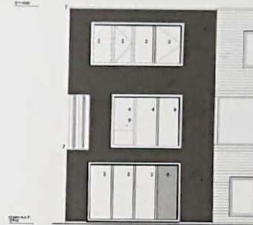


立面图 FAÇADE

1. Eternit Natura面板
2. Hi+玻璃
3. Colorbet 镀膜
4. 安全玻璃
5. 铝
6. 金属围栏
7. 铝护栏
8. 车库门

1. Cladding: Eternit Natura panels
2. Hi+ glass
3. Colorbet, emalised glass
4. Safety glass
5. Aluminium
6. Metal fence
7. Aluminium parapet
8. Garage door

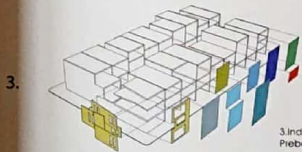
1. Eternit Natura面板
2. Hi+玻璃
3. Colorbet, emalised glass
4. 安全玻璃
5. 铝
6. 金属围栏
7. 铝护栏
8. 车库门



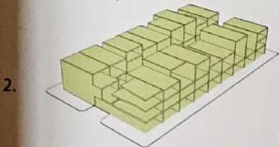
立面图 FAÇADE



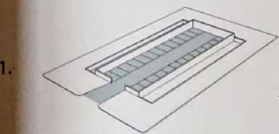
4. Mass produced urban block with customized houses
大规模批量式楼房，个性化定制式房屋



3. Individual construction: Prefabricated prefabricated façade
个体建筑，预制外墙



2. Collective construction: Prefabricated prefabricated elements
整体建筑，预制构件



1. Half-sunken parking garage
半地下车库



© Luuk Kramer



© Luuk Kramer

转角住宅（新莱顿私人住宅），Sophie Valla architects in collaboration with Marc Koehler Architects, 荷兰，莱顿，2011年

转角楼立面的3个不断变换其朝向的角度，以及线条与体块的穿插，营造出有趣的氛围，凸显建筑前后立面变化的几何图形，且建筑的表面材料以及门窗边框都伴随着结构而起伏。

Twisted Corner Private house in Nieuw Leyden, Sophie Valla architects in collaboration with Marc Koehler Architects, Leiden, the Netherlands, 2011

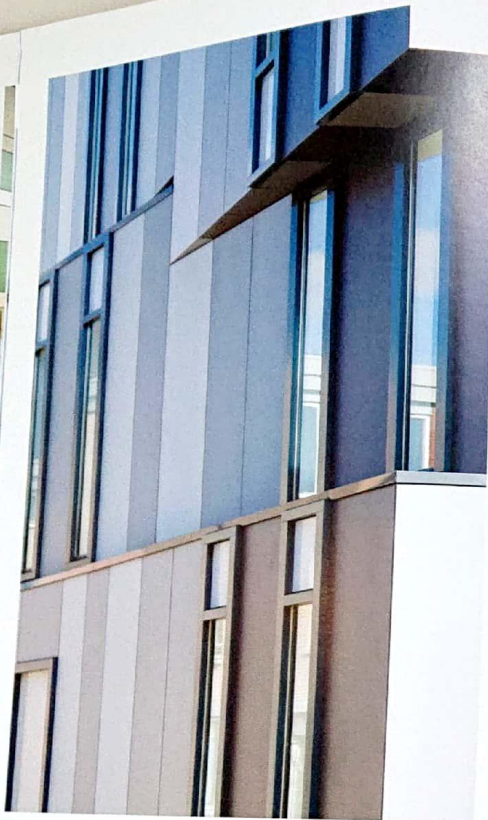
The lateral façade of the house ending the block presents an intriguing and dynamic play of lines and volume. This is brought about by shifts in the orientation of the façade at each of the three floors. A "transformation" of the geometry of the front and back façades over the length of this side is thereby created. The horizontal transformation is accompanied over the whole façade by a vertical articulation of the surface paneling and of the window frames.

转角住宅 (新莱顿私人住宅), Sophie Valla architects in collaboration with Marc Koelher Architects, 荷兰, 莱顿, 2011年

侧立面细高的窗户不仅从视觉上与结构相呼应, 强调建筑与室内, 还为室内提供了由内到外的良好视野, 强调建筑与室内, 从而加强了私密性。总体来讲, 建筑外部结构让人感受到动感的线条起伏, 而在室内, 大窗户在为室内提供良好视野的同时, 增加了内部宽敞的空间。

Twisted Corner Private house in Nieuw Leyden, Sophie Valla architects in collaboration with Marc Koelher Architects, Leiden, the Netherlands, 2011

The high and narrow windows on this wall not only emphasize the vertical articulations on this wall but they also give clearly framed views while their form limits the possibility of looking in. In general, the external structure presents dynamic lines while the large windows on the façade offers a good view and visually broaden the interior space.



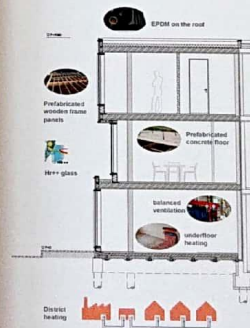
© Luuk Kramer



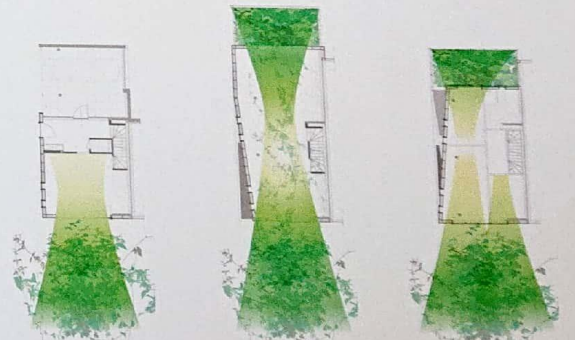
© Luuk Kramer



© Luuk Kramer



能源管理 ENERGY MANAGEMENT



采光和视角 DAYLIGHT AND VIEWS