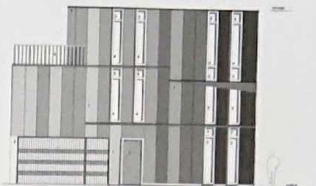


TWISTED CORNER PRIVATE HOUSE IN NIEUW LEYDEN

1. Cladding: Eternit Natura panels
2. Hi+ glass
3. Colorbet, emalised glass
4. Safety glass
5. Aluminium
6. Metal fence
7. Aluminium parapet
8. Garage door

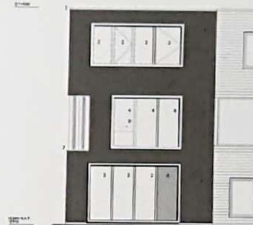


立面图 FAÇADE

1. Eternit Natura面板
2. Hi+玻璃
3. Colorbet 玻璃
4. 安全玻璃
5. 铝
6. 金属围栏
7. 铝护栏
8. 车库门

1. Cladding: Eternit Natura panels
2. Hi+ glass
3. Colorbet, emalised glass
4. Safety glass
5. Aluminium
6. Metal fence
7. Aluminium parapet
8. Garage door

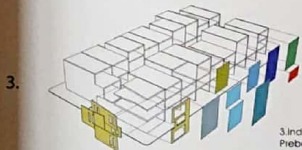
1. Eternit Natura面板
2. Hi+玻璃
3. Colorbet, emalised glass
4. 安全玻璃
5. 铝
6. 金属围栏
7. 铝护栏
8. 车库门



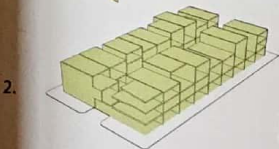
立面图 FAÇADE



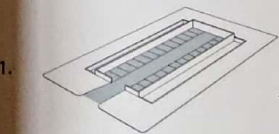
4. Mass produced urban block with customized houses  
大规模批量式楼房，个性化定制式房屋



3. Individual construction: Prefabricated prefabricated façade  
个体建筑，预制外墙



2. Collective construction: Prefabricated prefabricated elements  
整体建筑，预制构件



1. Half-sunken parking garage  
半地下车库



© Luuk Kramer



© Luuk Kramer

转角住宅（新莱顿私人住宅），Sophie Valla architects in collaboration with Marc Koehler Architects, 荷兰，莱顿，2011年

转角楼立面的3个不断变换其朝向的角度，以及线条与体块的穿插，营造出有趣的氛围，凸显建筑前后立面变化的几何图形，且建筑的表面材料以及门窗边框都伴随着结构而起伏。

Twisted Corner Private house in Nieuw Leyden, Sophie Valla architects in collaboration with Marc Koehler Architects, Leiden, the Netherlands, 2011

The lateral façade of the house ending the block presents an intriguing and dynamic play of lines and volume. This is brought about by shifts in the orientation of the façade at each of the three floors. A "transformation" of the geometry of the front and back façades over the length of this side is thereby created. The horizontal transformation is accompanied over the whole façade by a vertical articulation of the surface paneling and of the window frames.

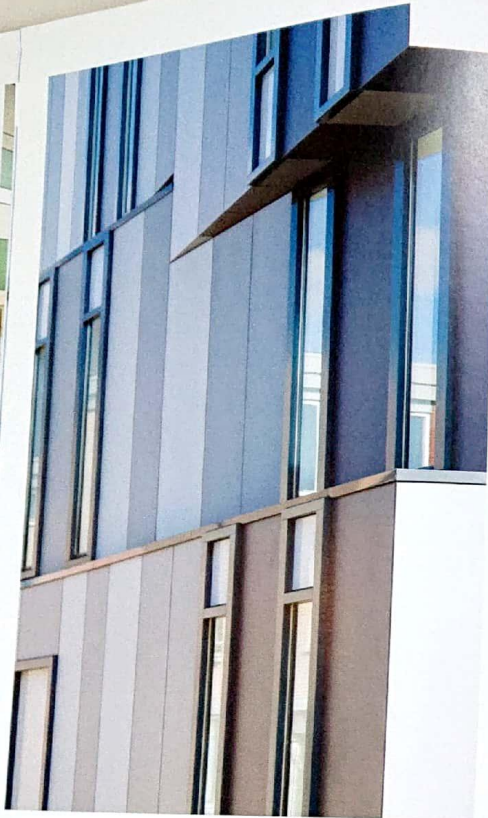


转角住宅 (新莱顿私人住宅), Sophie Valla architects in collaboration with Marc Koelher Architects, 荷兰, 莱顿, 2011年

侧立面细高的窗户不仅从视觉上与结构相呼应, 强调建筑与室内, 还为室内提供了由内到外的良好视野, 强调建筑与室内, 从而加强了私密性。总体来讲, 建筑外部结构让人感受到动感的线条起伏, 而在室内, 大窗户在为室内提供良好视野的同时, 增加了内部宽敞的空间。

Twisted Corner Private house in Nieuw Leyden, Sophie Valla architects in collaboration with Marc Koelher Architects, Leiden, the Netherlands, 2011

The high and narrow windows on this wall not only emphasize the vertical articulations on this wall but they also give clearly framed views while their form limits the possibility of looking in. In general, the external structure presents dynamic lines while the large windows on the façade offers a good view and visually broaden the interior space.



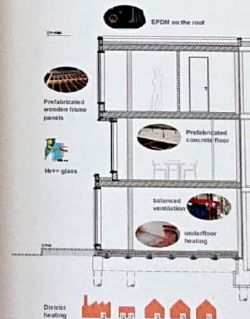
© Luuk Kramer



© Luuk Kramer



© Luuk Kramer



能源管理 ENERGY MANAGEMENT



采光和视角 DAYLIGHT AND VIEWS

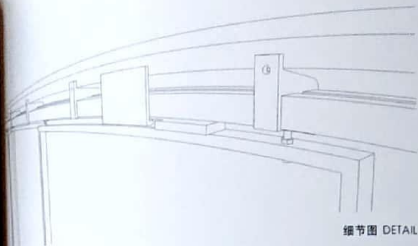


GOLDEN SHUTTERS

建筑，Sophie Valia Architects，荷兰，阿姆斯特丹北，2010年  
建筑采用金属开板性。人们从两个大型的光滑立面自由进入。为了使建筑免受汪达尔主义破坏，建筑师采用了独特的滑动百叶窗设计。金黄色的铝制百叶窗嵌于橡胶密封条中，将建筑严实地封闭于角落。铝金属板上的打孔图案由地面延伸到屋顶，给人以动态自由的感觉。精密的点点，镂空在金属面板，让金属凸显织物般的柔美，与建筑的整体风格相融合，展示了出自女性设计师之手的建筑的特有魅力。

Golden Shutters, Sophie Valia Architects, Amsterdam North, The Netherlands, 2010

The 2 pavilions have an open character and are accessible from 2 large glazed elevations. To protect the buildings from vandalism, the architecture has developed itself as a unique system of sliding shutters. The golden aluminum shutters placed on rubbers rails enclose the building at the corner of the street. From the roof to the ground the pattern punched into the aluminum metal plates offers a twisting illusion. The densely punched holes make metal plates as soft and delicate as fabrics. In particular, the rose-colored frameworks reveal the unique glamour a female designer brings to the building.



细节图 DETAIL



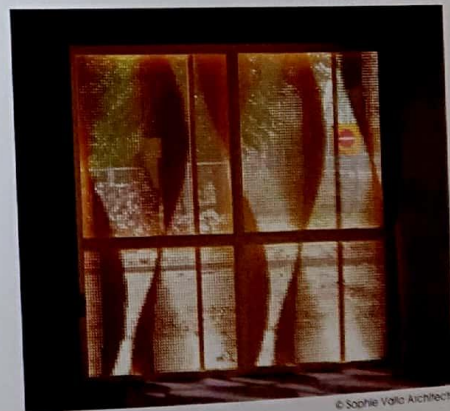
© Sophie Valia Architects



© Sophie Valia Architects



© Sophie Valia Architects



© Sophie Valia Architects